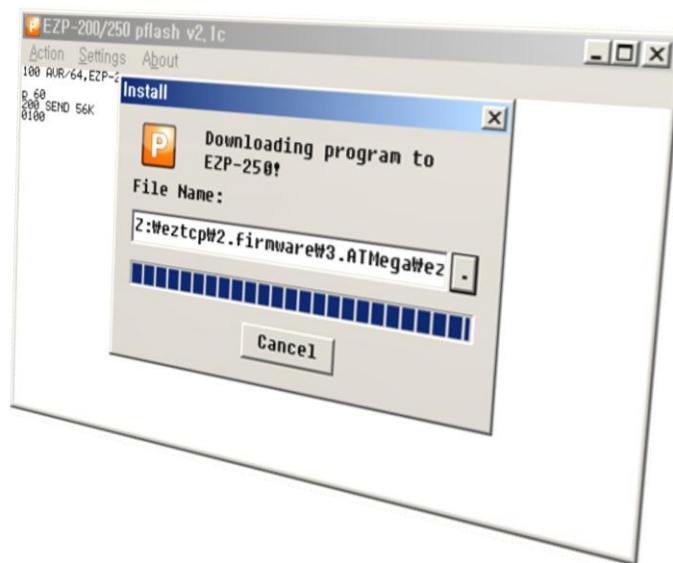


## Application Note

# Upgrading Firmware of EZP-250

Version 1.0  
2009-09-02



Sollae Systems Co., Ltd.  
<http://www.sollae.co.kr>

# Contents

<b>CONTENTS .....</b>	<b>- 1 -</b>
<b>1 FIRMWARE UPGRADE .....</b>	<b>- 2 -</b>
1.1 Introduction.....	- 2 -
1.2 Firmware Upgrade .....	- 2 -
1.2.1 Preparation.....	- 2 -
1.2.2 Run pflash .....	- 2 -
1.2.3 Configuring Port.....	- 3 -
1.2.4 Selecting a Firmware.....	- 4 -
1.2.5 Resetting EZP-250.....	- 5 -
<b>2 REVISION HISTORY .....</b>	<b>- 7 -</b>

# 1 Firmware Upgrade

## 1.1 Introduction

Downloading F/W of EZP-250 can be implemented via its serial port. All the firmware of ezTCP products line has been changing for adding useful options or fixing some bugs. So, we recommend that download and use the latest released firmware.

This document is based on EVB interface.

## 1.2 Firmware Upgrade

### 1.2.1 Preparation

Insert EZP-250 into the evaluation board (EVB). And connect a serial cable to PC's COM port and Power it on.

### 1.2.2 Run pflash

Run pflash.

pflash is software for sending F/W file through serial.



Fig 1-1 Initial window of pflash

### 1.2.3 Configuring Port

- Disconnect the default serial connection with [Action] -> [Disconnect].

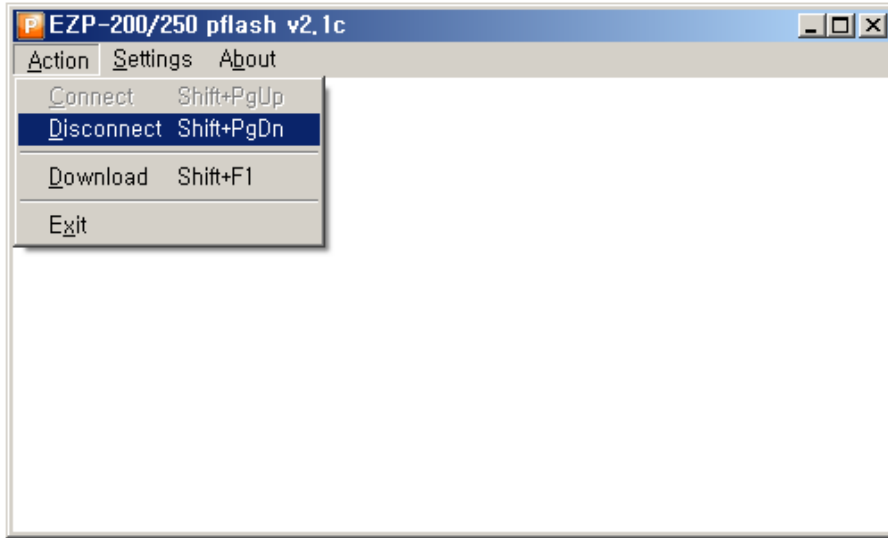


Fig 1-2 Disconnecting default connection

- Set as the following with [Settings]. And Select COM port as your environment. In this example, COM8 is used. You should select a COM port which you use.

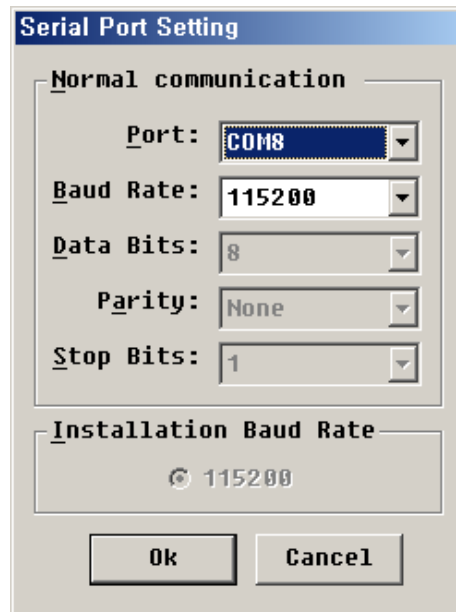


Fig 1-3 Window of Setting

- Open COM port with [Action] -> [Connect]

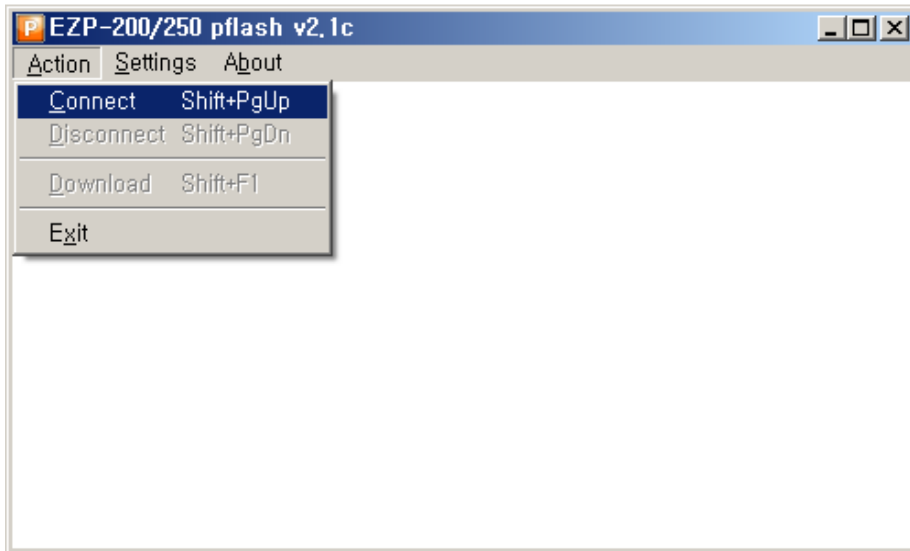


Fig 1-4 Opening COM port

#### 1.2.4 Selecting a Firmware

- Select a firmware to download with [Action] -> [Download] -> [...]

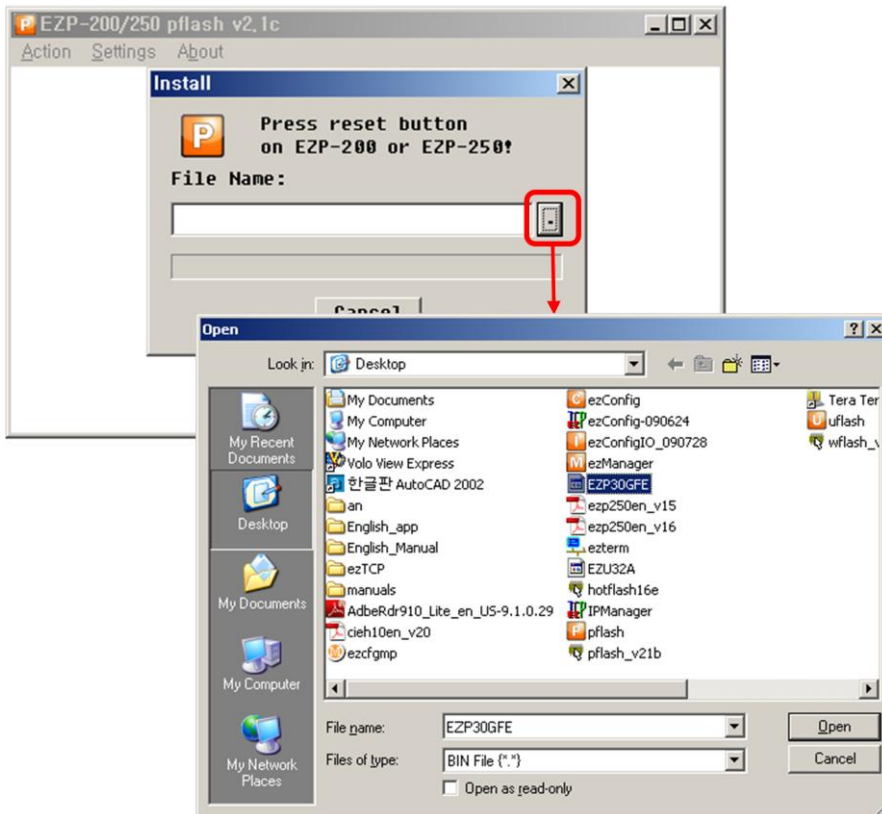


Fig 1-5 Selecting a firmware file

### 1.2.5 Resetting EZP-250

- If user presses the Reset switch, the firmware will be downloaded automatically.

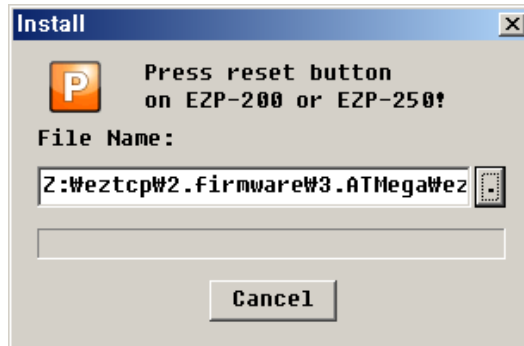


Fig 1-6 Reset

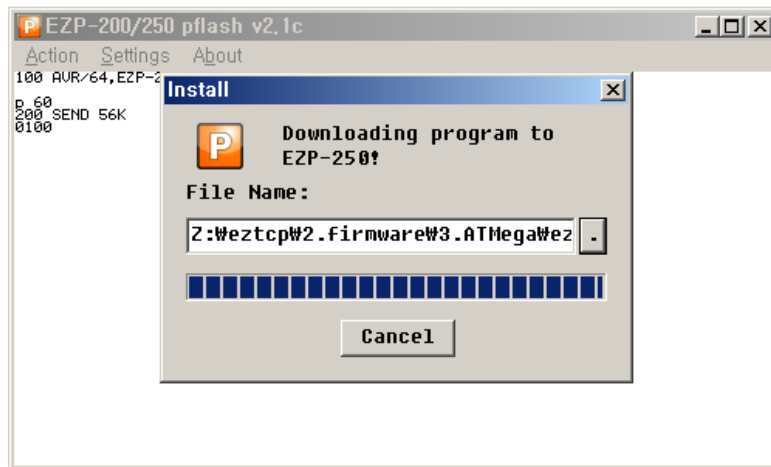


Fig 1-7 Progressing download

- If the following messages are shown in the main window of pflash, the downloading would have been completed.

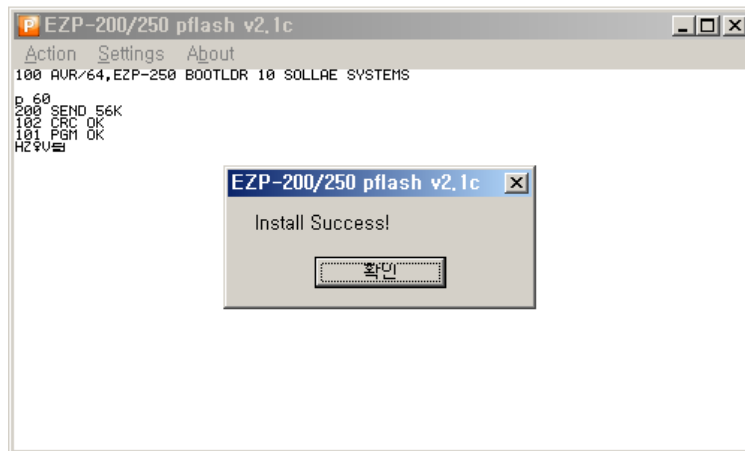


Fig 1-8 Successful download

## 2 Revision History

Date	Version	Description
2009.09.02	1.0	Created