

ezTCP Technical Document

CIE-H12 Web page

Sample

Version 1.0

2011-08-31



Sollae Systems Co., Ltd.

<http://www.sollae.co.kr>

Contents

Contents

| | |
|--|-----------|
| 1 Overview | 3 |
| 1.1 Overview | 3 |
| 2 Default | 4 |
| 2.1 Simple Modification of the Web Page..... | 4 |
| 2.1.1 In Case of Background Image Modification | 5 |
| 2.1.2 In Case of Input/Output Port Modification..... | 5 |
| 2.1.3 In Case of Read Button Modification | 5 |
| 2.2 Structure and Properties | 6 |
| 2.2.1 Page Structure..... | 6 |
| 2.2.2 CSS Properties of Each Block..... | 7 |
| 2.2.3 "bg" Style..... | 8 |
| 2.2.4 "input_01_btn", "input_02_btn", "output_01_btn" Style | 9 |
| 2.2.5 "output_01_cmt", "output_01_cmt", "output_01_cmt" Style..... | 10 |
| 2.2.6 "read_btn" Style | 11 |
| 3 Revision History | 12 |

1 Overview

1.1 Overview

The HTML page has to be updated when you intend to monitor and control CIE-H12 over the web browser. We have released web page samples which can be modified in any ways for a private purpose.

There are a default page and a text based page as a sample.

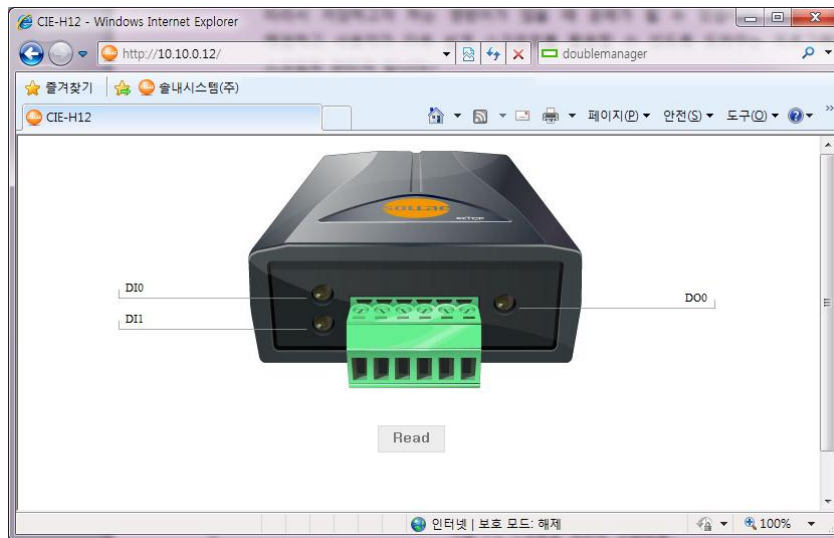


Figure 1-1 example of a sample : index.html of a default page

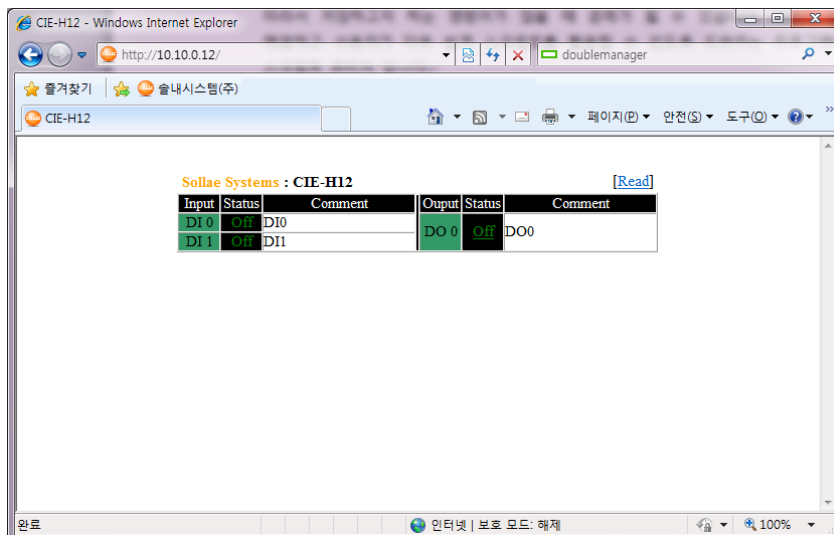


Figure 1-2 example of a sample : index.html of a text based page

2 Default

2.1 Simple Modification of the Web Page

```
<head>
  <title>CIE-H12</title>
  <meta name="author" content="Sollae Systems Co.,Ltd." />
  <meta name="copyright" content="©copy;1998-2011 Sollae Systems Co.,Ltd." />
  <link rel="icon" href="favicon.ico" type="images/x-icon" />
  <link rel="shortcut icon" href="favicon.ico" type="images/x-icon" />
  <style type="text/css">
    <!--
      #bg {position:relative; margin: 0 auto; width: 650px; height: 406px; background: url(bg.jpg) no-repeat center top;}
      #input_01_cmt {font-family:"Times New Roman"; position:absolute; top:136px; left:34px; font-size: 11px;}
      #input_02_cmt {font-family:"Times New Roman"; position:absolute; top:167px; left:34px; font-size: 11px;}
      #output_01_cmt {font-family:"Times New Roman"; position:absolute; top:146px; right:37px; font-size: 11px;}
      #input_01_btn {position:absolute; top:136px; left:216px;}
      #input_02_btn {position:absolute; top:166px; left:216px;}
      #output_01_btn {position:absolute; top:146px; left:398px;}
      #read_btn {position:absolute; top:280px; left:285px; background-color:#dedcdc; border:1px solid #dedcdc; color:#777777;
        font-size:13px; font-weight:bold; padding:5px 14px; text-decoration:none;}
      #read_btn:hover {background-color:#dfdfdf;}
    -->
  </style>
</head>

<body bgcolor=#FFFFFF>
  <div id="bg">
    <div id="output_01_btn"><? io_echo_equ($o0, 0, "<a href=index.html?o0=1><img src=output_off.jpg border=0></a>",
      "<a href=index.html?o0=0><img src=output_on.jpg border=0></a>"); ?></div>
    <div id="input_01_btn"><? io_echo_equ($i0, 0, "<img src=input_01_off.jpg border=0>", "<img src=input_01_on.jpg border=0>"); ?></div>
    <div id="input_02_btn"><? io_echo_equ($i1, 0, "<img src=input_02_off.jpg border=0>", "<img src=input_02_on.jpg border=0>"); ?></div>
    <div id="output_01_cmt"><? io_echo($o0); ?></div>
    <div id="input_01_cmt"><? io_echo($i0); ?></div>
    <div id="input_02_cmt"><? io_echo($i1); ?></div>
    <a href="index.html" id="read_btn">Read</a>
  </div>
</body>
```

Figure 2-1 index.html in a default folder



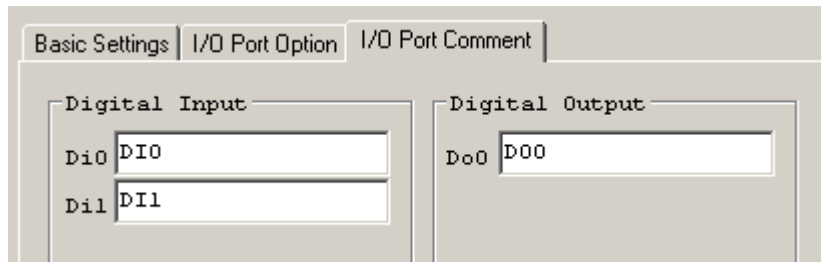
Figure 2-2 execution of index.html on the web browser

2.1.1 In Case of Background Image Modification

Insert an image path on the ① *url(bg.jpg)* of Figure 2-2

2.1.2 In Case of Input/Output Port Modification

The words on the I/O port tab, can be modified in ezManager, will be presented on the ② of Figure 2-2.



1 Figure 2-3 I/O port tab in ezManager



Figure 2-4 web browser that the words on the I/O port tab will be presented

2.1.3 In Case of Read Button Modification

The page can be refreshed whenever you click this button. If you would like to change the "Read" word, you should modify ③ of Figure 2-1. Also, please refer to the "*#read_btn, #read_btn:hover*" of CSS for changing style.

2.2 Structure and Properties

2.2.1 Page Structure

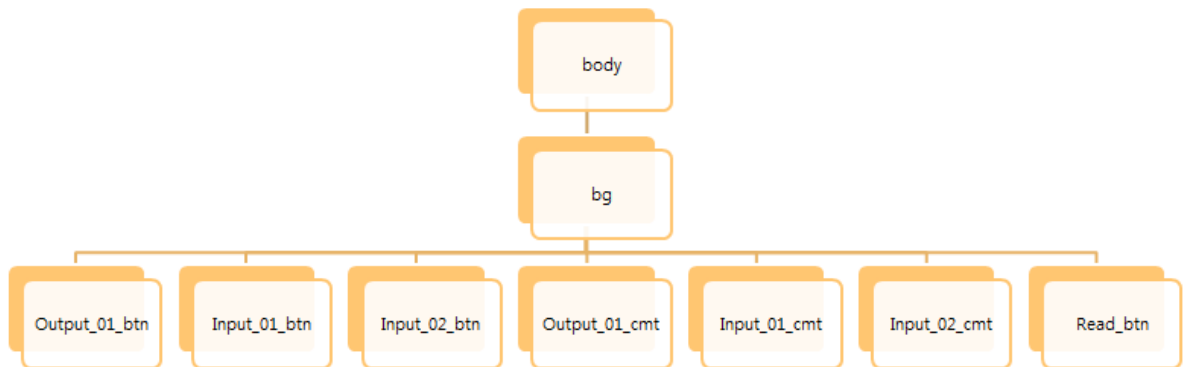


Figure 2-5 Page Structure

Each block of Index.html has been defined with CSS whose structure is shown in Figure 2-5.

2.2.2 CSS Properties of Each Block

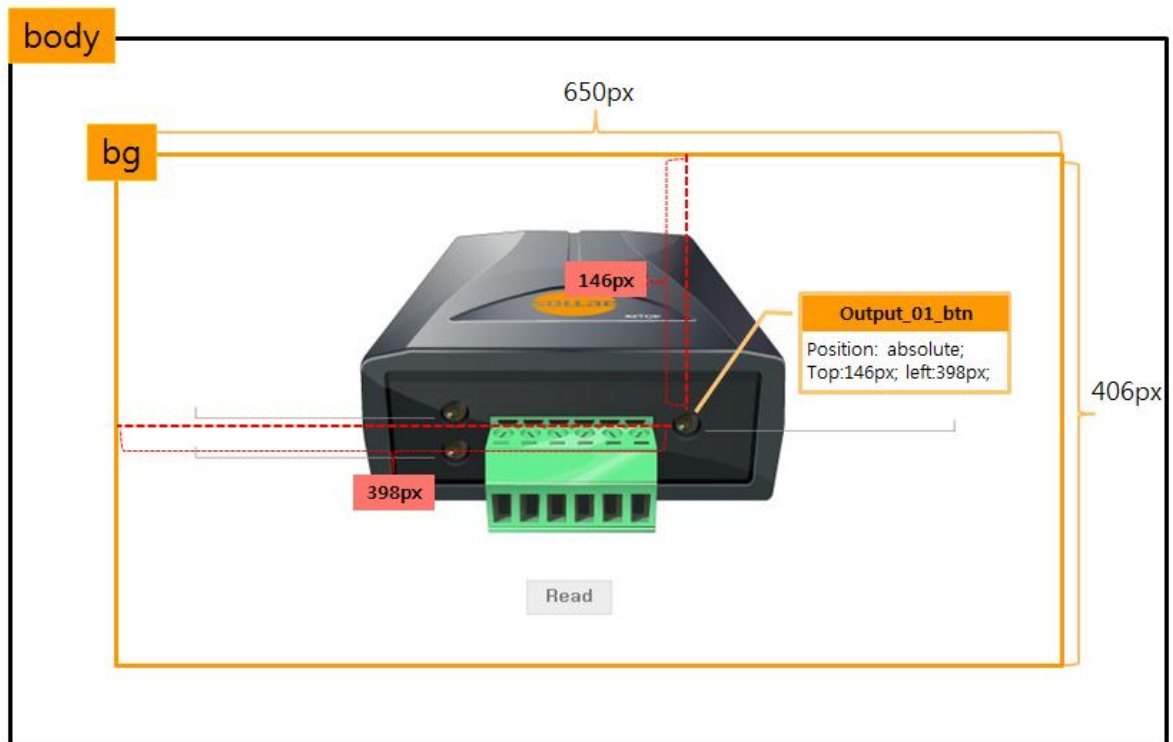


Figure 2-6 entire CSS structure

Each block has hierarchy structure and ancestors include descendants. Ancestors' style affect descendant's as you see Figure 2-6. For example, an element of *output_01_btn* style is positioned based on the *bg*.

2.2.3 “bg” Style

```
#bg {  
    position:relative;  
    margin: 0 auto;  
    width: 650px;  
    height: 406px;  
    background: url(bg.jpg) no-repeat center top;  
}
```

bg is a *div* parent that higher than other *divs*. So, defined properties on the *bg* influence children's style.

Position : relative

The element will be relatively set by position property

Margin : 0 auto

It makes content position in the middle. As it is set '*width: 650px*', the element will position in the middle of 650 pixels.



Figure 2-6 *bg* style

Width, height

The width and height of *bg* style is set to 650px and 406px, and not repeated because of no-repeat option. The background image is set to *bg.jpg* which will be arranged in the upper center of a relevant block.

2.2.4 “input_01_btn”, “input_02_btn”, “output_01_btn” Style

```
#input_01_btn {  
    position:absolute;  
    top:136px;  
    left:216px;  
}  
#input_02_btn {  
    position:absolute;  
    top:166px;  
    left:216px;  
}  
#output_01_btn {  
    position:absolute;  
    top:146px;  
    left:398px;  
}
```

Position:absolute

It sets pixels based on the parent position, therefore, the element will be arranged in the appointed position.



Figure 2-7 btn Style

2.2.5 “output_01_cmt”, “output_01_cmt”,“output_01_cmt” Style

```
#input_01_cmt {
    font-family:"Times New Roman";
    position:absolute;
    top:136px;
    left:34px;
    font-size: 11px;
}
#input_02_cmt {
    font-family:"Times New Roman";
    position:absolute;
    top:167px;
    left:34px;
    font-size: 11px;
}
#output_01_cmt {
    font-family:"Times New Roman";
    position:absolute;
    top:146px;
    right:37px;
    font-size: 11px;
}
```

Position:absolute

It sets pixels based on the parent position, then the element will be arranged into the appointed position.

2.2.6 “read_btn” Style

```
#read_btn {
    position:absolute;
    top:280px;
    left:285px;
    background-color:#ededed;
    border:1px solid #dcdcdc;
    color:#777777;
    font-size:13px;
    font-weight:bold;
    padding:5px 14px;
    text-decoration:none;
}

#read_btn:hover {
    background-color:#dfdfff;
}
```

#read_btn

It makes the `Read` property be shown in a button on the html

#read_btn:hover

When mouseover the Read button, background color will be changed into `#dfdfff`



Figure 2-8 read_btn style

3 Revision History

| Date | version | Comment | Author |
|------------|---------|-------------------|-----------|
| 2011.08.22 | 1.0 | ○ Initial Release | Lisa Shin |